

Finished print size: 40 x 95 cm

Data format: 42,9 x 99,5 mm

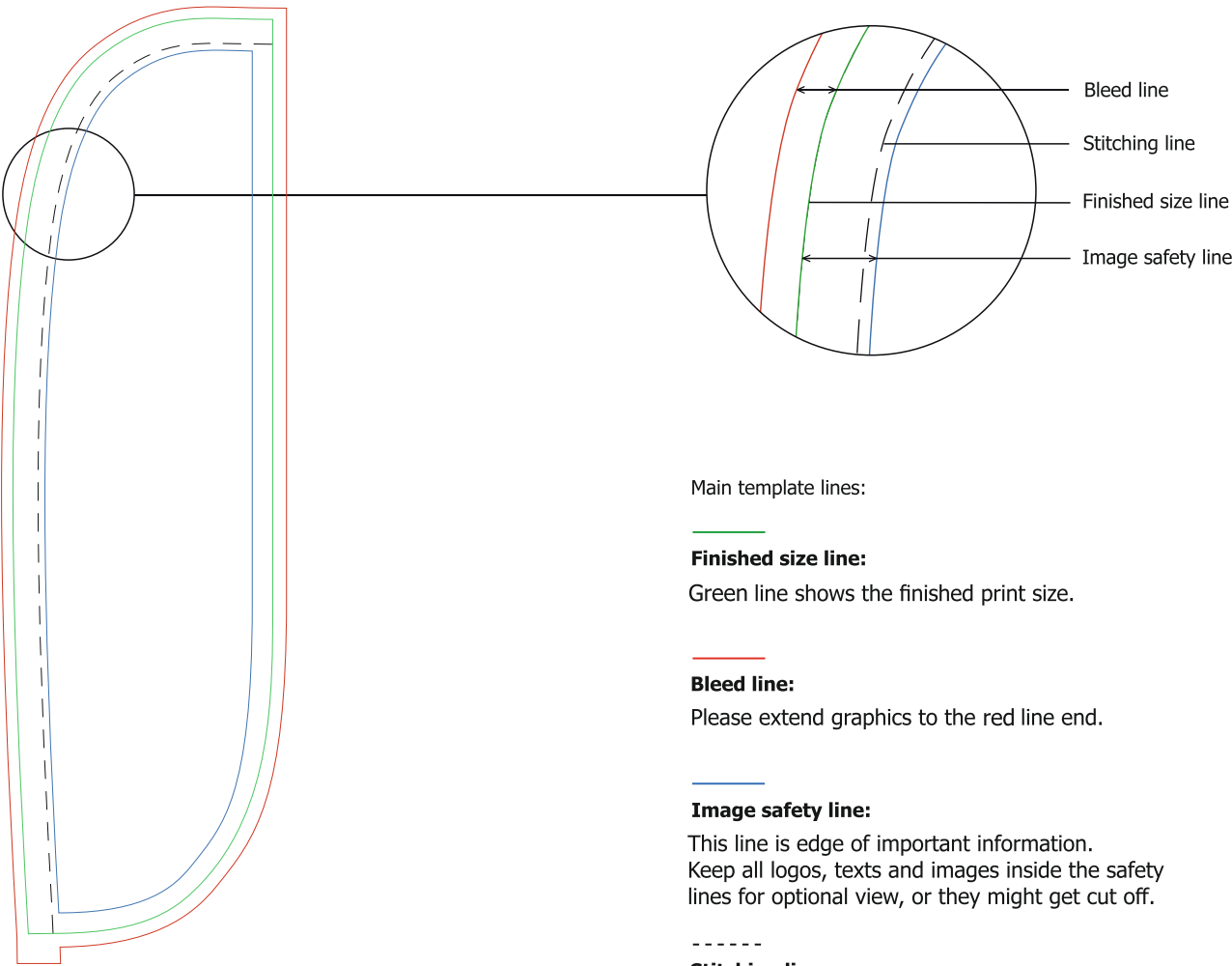
(Finished print size +Bleed)

THINGS TO DO:

- Outline all fonts
- Convert all symbols in objects
- Convert all graphics files in CMYK color space mode
- Submit Your artwork files with TIFF, JPG, CDR and PDF format
- JPG files must be saved with Highest or Maximum Quality, TIFF files must be saved with “LZW compression”
- Execute template lines (green, blue, stitching) before submitting artworks

THINGS TO KNOW:

- The template is at 1:10 on page 2 of this document
- A minimum resolution of 600 dpi for 1:10 scale, 150 for dpi for 1:1 scale
- DO NOT RESIZE the template
- For multiple and/or double print product, design on all layouts within the template even if the layout graphics are the same



Main template lines:

**Finished size line:**

Green line shows the finished print size.

**Bleed line:**

Please extend graphics to the red line end.

**Image safety line:**

This line is edge of important information. Keep all logos, texts and images inside the safety lines for optional view, or they might get cut off.

**Stitching line**

**ATTENTION!** This template DO NOT match the original scale.